

SURFACE PROFILES: P01B

CHARACTERISTICS

Profile for surface or recessed installation with limited width.
Can be fitted with angle-joint accessory.

CAN BE USED WITH LED STRIPS WITH MAXIMUM WIDTH:

12 mm.

MAXIMUM POWER:

15W/m

MATERIALS

6063 aluminium profile with white PMMA screen.

ACCESSORIES INCLUDED

Every 3 metre bar is complete with 3 sets of end caps (with or without holes) and 3 sets of mounting clips.

INSTALLATION

Surface or recessed. Cabling can be in line with the profile or exit the bottom of the profile.

PACKAGE

Supplied in packages of 5 bars, each one measuring 3 meters complete with screen and accessories. Available with separate codes: junction bracket and 90° corner bracket as well as spare accessories.

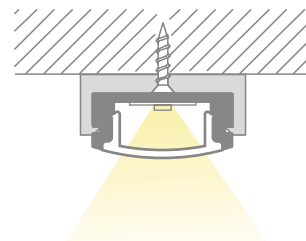
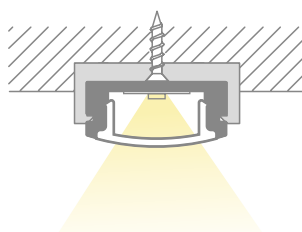
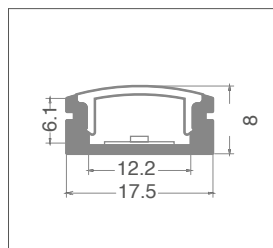
Cutting Project profiles to size*:

fixed cost of piece work

VA04

* Includes mounting accessories.

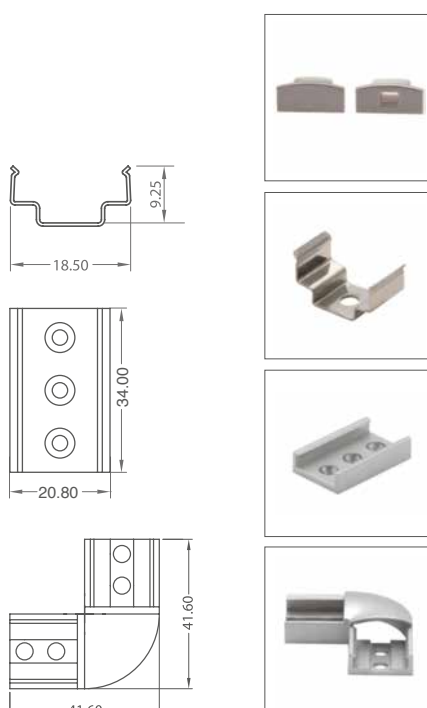
IP20



art	Description	L1	H	L	8011905	
P01B-S-PF-300 ♦	profile complete with PMMA screen and accessories	17,5	8	3000	912253	1 / 5



♦ To be discontinued



art	Description	8011905	
P01B-A-EC ♦	3 + 3 silver colour PC end caps	912260	1
art	Description	8011905	
P01B-A-MC ♦	3 sets of metal clips	912277	1
art	Description	8011905	
P01B-A-CP ♦	3 silver colour PC junction brackets	912284	1
art	Description	8011905	
P01B-A-CP90 ♦	3 silver colour 90° PC junction brackets	912291	1

♦ To be discontinued